



# Multi-tiered Experiential Practices in a Public High School







# Multi-tiered Experiential Practices in a Public High School

**Chris Hasebrook**

Teacher-Director at Linworth AP in Worthington, Ohio



# Multi-tiered Experiential Practices in a Public High School

## **My objective today:**

Develop an awareness of what our program is doing,





# Multi-tiered Experiential Practices in a Public High School

## **My objective today:**

Develop an awareness of what our program is doing,  
Build high school friendships,



# Multi-tiered Experiential Practices in a Public High School

## **My objective today:**

Develop an awareness of what our program is doing,  
Build high school friendships,  
Find like-minded post-secondary partners, and



# Multi-tiered Experiential Practices in a Public High School

## **My objective today:**

Develop an awareness of what our program is doing,  
Build high school friendships,  
Find like-minded post-secondary partners, and  
Develop a K-12 presence at NSEE.



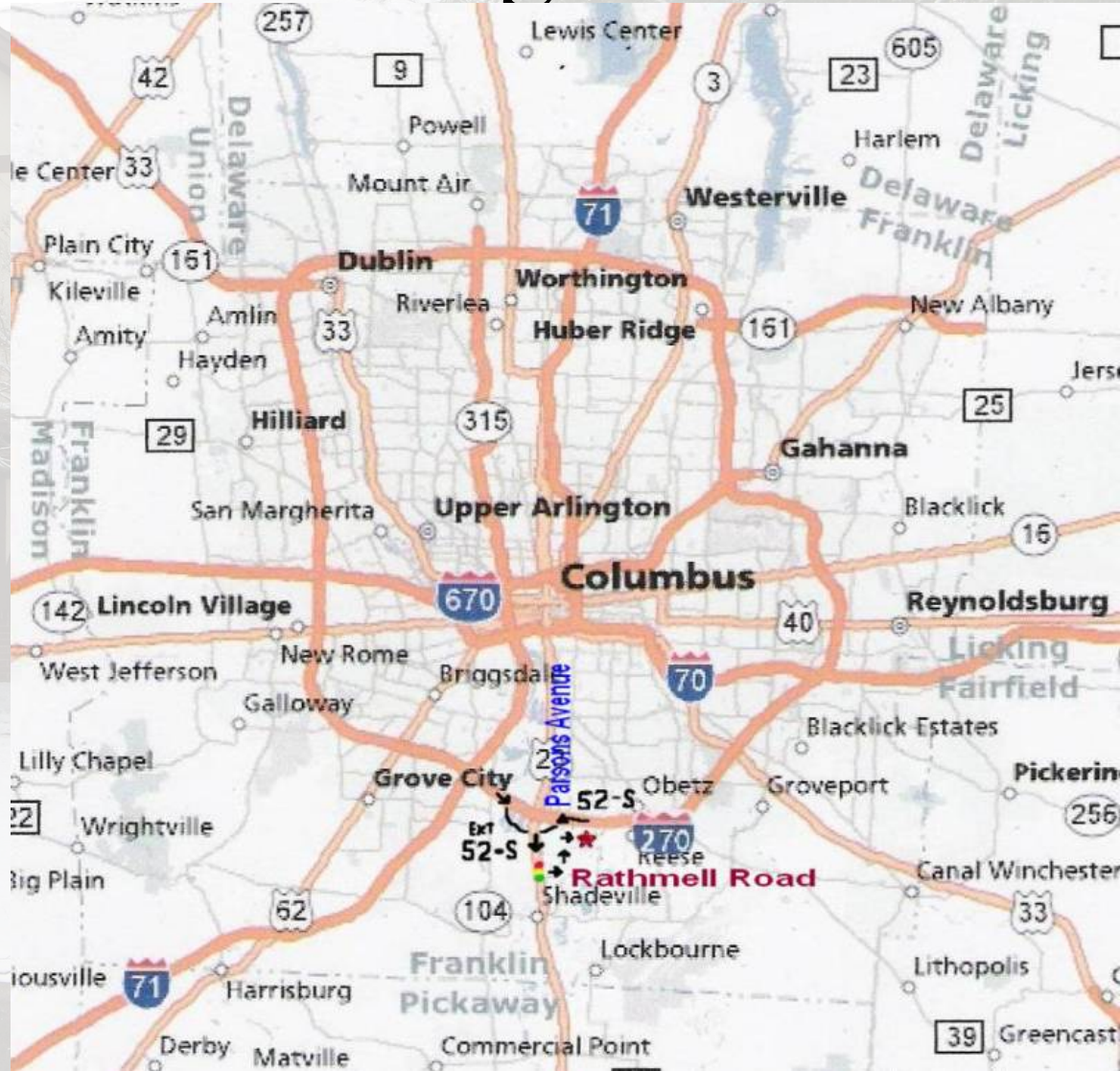
# Multi-tiered Experiential Practices in a Public High School

## **Central Ohio**

Columbus

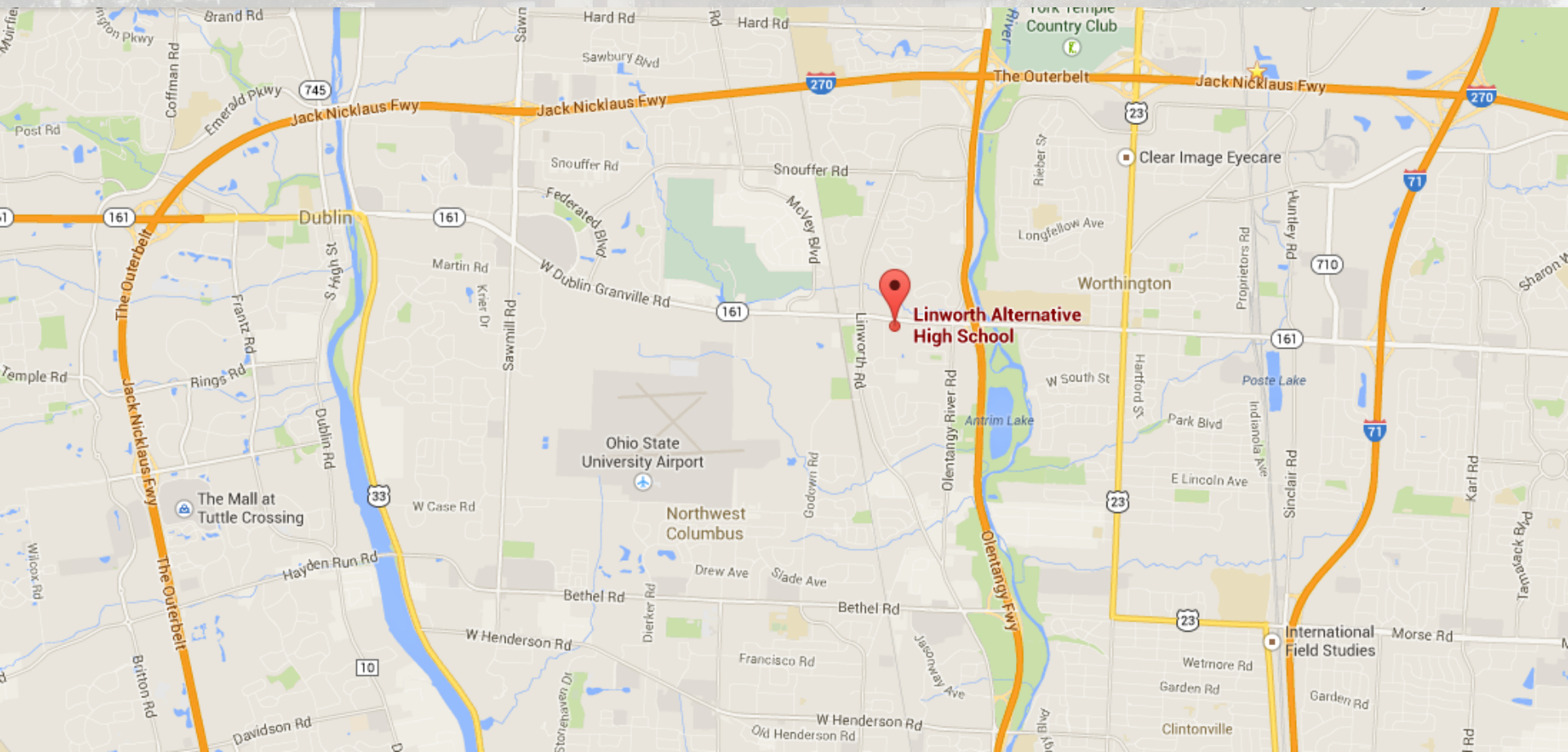


# Multi-tiered Experiential Practices in a Public High School Worthington





# Multi-tiered Experiential Practices in a Public High School **Linworth AP (Alternative Program)**







# Multi-tiered Experiential Practices in a Public High School **Linworth AP**

Part of a public district: Worthington City Schools



The background of the slide is a photograph of a school building, likely a high school, during winter. The building has a gabled roof and large windows. The ground is covered in snow, and there are bare trees and evergreens in the foreground and background. The text is overlaid on this image.

# Multi-tiered Experiential Practices in a Public High School **Linworth AP**

Part of a public district: Worthington City Schools

2500 students at two high schools:

Thomas Worthington: 1400 students

Worthington Kilbourne: 1100 students



The background of the slide is a photograph of a school building, likely a high school, in a winter setting. The building has a gabled roof and large windows. The ground is covered in snow, and there are bare trees and evergreens in the foreground and background. The overall tone is muted and wintry.

# Multi-tiered Experiential Practices in a Public High School **Linworth AP**

Part of a public district: Worthington City Schools

2500 students at two high schools:

Thomas Worthington: 1400 students

Worthington Kilbourne: 1100 students

Linworth AP is a program of the two high schools



The background of the slide is a photograph of a school building, likely a high school, in a winter setting. The building has a gabled roof and is partially obscured by snow-covered trees and bushes. The ground in the foreground is covered in a layer of snow.

# Multi-tiered Experiential Practices in a Public High School **Linworth AP**

Part of a public district: Worthington City Schools

2500 students at two high schools:

Thomas Worthington: 1400 students

Worthington Kilbourne: 1100 students

Linworth AP is a program of the two high schools

180 students, grades 9-12, all skill sets



# Multi-tiered Experiential Practices in a Public High School **Linworth AP**

Part of a public district: Worthington City Schools

2500 students at two high schools:

Thomas Worthington: 1400 students

Worthington Kilbourne: 1100 students

Linworth AP is a program of the two high schools

180 students, grades 9-12, all skill sets

9.0 FTE's (all four core areas, PE/Health)



# Multi-tiered Experiential Practices in a Public High School **Linworth AP**

Part of a public district: Worthington City Schools

2500 students at two high schools:

Thomas Worthington: 1400 students

Worthington Kilbourne: 1100 students

Linworth AP is a program of the two high schools

180 students, grades 9-12, all skill sets

9.0 FTE's (all four core areas, PE/Health)

43<sup>rd</sup> year



# Multi-tiered Experiential Practices in a Public High School **Linworth AP**

Part of a public district: Worthington City Schools

2500 students at two high schools:

Thomas Worthington: 1400 students

Worthington Kilbourne: 1100 students

Linworth AP is a program of the two high schools

180 students, grades 9-12, all skill sets

9.0 FTE's (all four core areas, PE/Health)

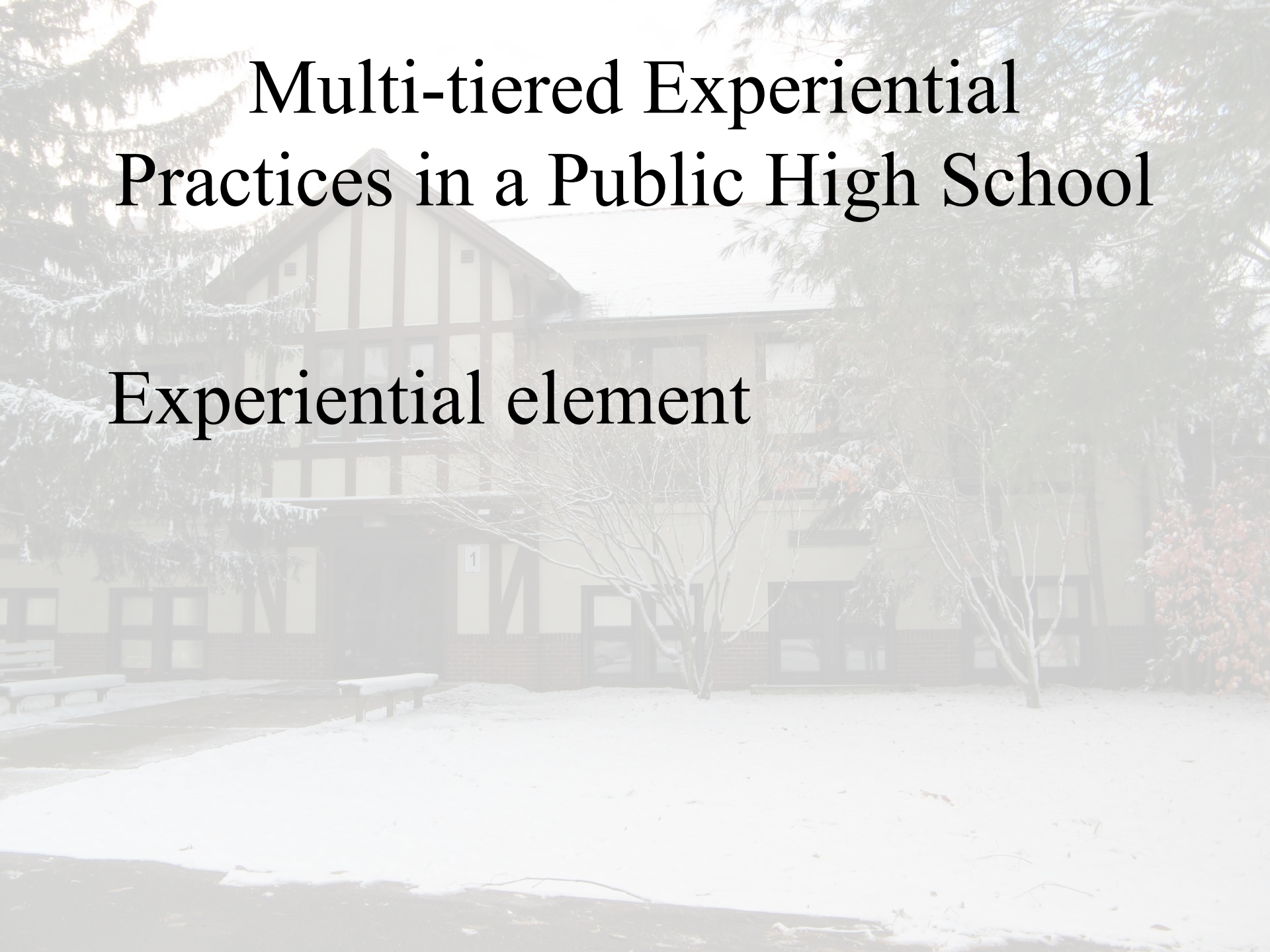
43<sup>rd</sup> year

Me: 28th year; all of my children graduated from the AP



# Multi-tiered Experiential Practices in a Public High School

## Experiential element





# Multi-tiered Experiential Practices in a Public High School

**Walkabout**





# Multi-tiered Experiential Practices in a Public High School

## Walkabout

Two eight-week international, national, and/or local internships

“50/50 exchange of service for learning”



# Multi-tiered Experiential Practices in a Public High School

## Walkabout

Two eight-week international, national, and/or local internships

all 2<sup>nd</sup> semester seniors



# Multi-tiered Experiential Practices in a Public High School

## Walkabout

Two eight-week international, national, and/or local internships

all 2<sup>nd</sup> semester seniors

30 hours per week



# Multi-tiered Experiential Practices in a Public High School

## Walkabout

Two eight-week international, national, and/or local internships

- all 2<sup>nd</sup> semester seniors

- 30 hours per week

- entirely away from the program



# Multi-tiered Experiential Practices in a Public High School

## Walkabout

Two eight-week international, national, and/or local internships

- all 2<sup>nd</sup> semester seniors

- 30 hours per week

- entirely away from the program

- reflective journal



# Multi-tiered Experiential Practices in a Public High School

## Walkabout

*Spain*; family-owned bakery

*Sri Lanka*; English education for Buddhist monks

*Australia*; animal care

*Puerto Rico*; zipline and canopy tours

*California*; computer programming

*South Carolina*; equine therapy program

*North Carolina*; yoga immersion/certification

*Arizona*; humanitarian aid

*Michigan*; ecology and conservation

*South Dakota*; national park naturalist

*Illinois*; theater and playwriting

*Nevada*; natural history museum

*Iowa*; education for those with special needs

*Florida*; engineering

*Ohio*; National Public Radio

*Ohio*; The OSU Psychology Department research



# Multi-tiered Experiential Practices in a Public High School

## Walkabout

*Spain*; family-owned bakery

*Sri Lanka*; English education for Buddhist monks

*Australia*; animal care

*Puerto Rico*; zipline and canopy tours

*California*; computer programming

*South Carolina*; equine therapy program

*North Carolina*; yoga immersion/certification

*Arizona*; humanitarian aid

*Michigan*; ecology and conservation

*South Dakota*; national park naturalist

*Illinois*; theater and playwriting

*Nevada*; natural history museum

*Iowa*; education for those with special needs

*Florida*; engineering

*Ohio*; National Public Radio

*Ohio*; The OSU Psychology Department research

*My children*



# Multi-tiered Experiential Practices in a Public High School

## Walkabout

*Nepal; Community relief*

*England; Museum*

*Italy; Art history*

*Israel; Zoo work*

*South Africa; Primate Rescue*

*Netherlands; Chocolatiering*

*Bulgaria; English Education*

*France; Language and Culture*

*Ireland; Artist Exchange*

*Ecuador; Amazon plant harvesting and growing*

*Iceland; Ecology volunteer*

*Haiti; Orphanage*

*Germany; Photography*

*Costa Rica; Conservation and sustainability*

*Bolivia; Orphanage*

*Serbia; National Theatre*

*Canary Islands; Marine Biology*

*Ireland; Radio Broadcast*

*UK; Castle Garden care taking*



# Multi-tiered Experiential Practices in a Public High School

## Walkabout

Two eight-week international, national, and/or local internships

- all 2<sup>nd</sup> semester seniors

- 30 hours per week

- entirely away from the program

- reflective journal

1.0 FTE



# Multi-tiered Experiential Practices in a Public High School

## Walkabout

Two eight-week international, national, and/or local internships

- all 2<sup>nd</sup> semester seniors

- 30 hours per week

- entirely away from the program

- reflective journal

1.0 FTE

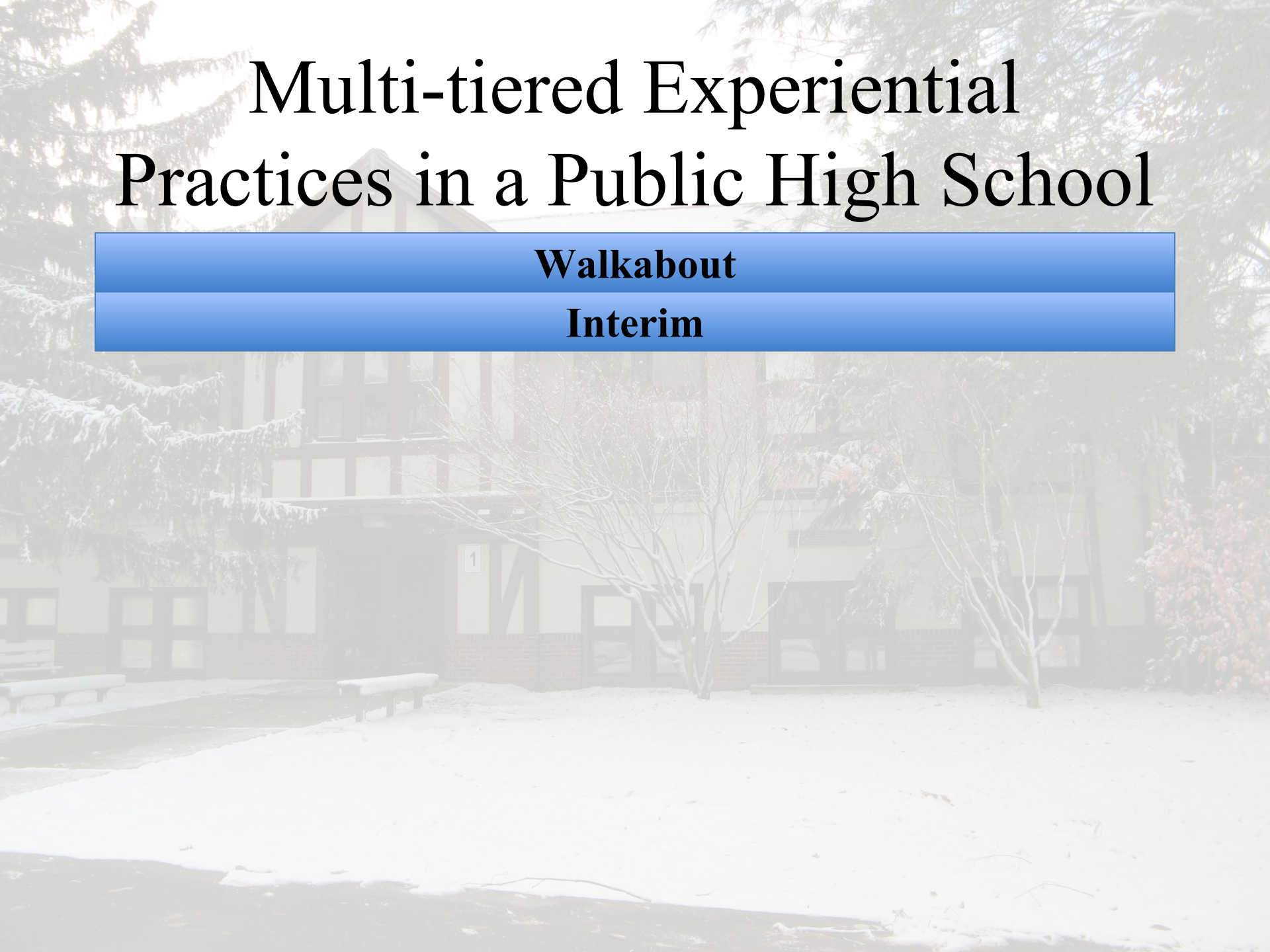
Staff partner



# Multi-tiered Experiential Practices in a Public High School

**Walkabout**

**Interim**





# Multi-tiered Experiential Practices in a Public High School

**Walkabout**

**Interim**

One-week, school-wide learning opportunity beyond the classroom

Juniors, Sophomores, and Freshmen



# Multi-tiered Experiential Practices in a Public High School

**Walkabout**

**Interim**

One-week, school-wide learning opportunity beyond the classroom

Juniors, Sophomores, and Freshmen

Students keep reflective journal, give presentation



# Multi-tiered Experiential Practices in a Public High School

**Walkabout**

**Interim**

**Student-taught classes**



# Multi-tiered Experiential Practices in a Public High School

**Walkabout**

**Interim**

**Student-taught classes**

- Music Americana
- Japanese Culture & Art
- Joy of Math
- Religions of the World
- British Monarchies
- Slavic Literature
- World Cinema
- Sci-Fi & Fantasy





# Multi-tiered Experiential Practices in a Public High School

**Walkabout**

**Interim**

**Student-taught classes**

**Linworth Forum**



# Multi-tiered Experiential Practices in a Public High School

**Walkabout**

**Interim**

**Student-taught classes**

**Linworth Forum**

All-day, conference-style guest speaker seminar

*-Life After Linworth*

*-The Road Less Traveled*

*-Letters to Me*



# Multi-tiered Experiential Practices in a Public High School

**Walkabout**

**Interim**

**Student-taught classes**

**Linworth Forum**

**All-school overnight**





# Experiential Public High School

about

rim

ight classes

h Forum

All-school overnight



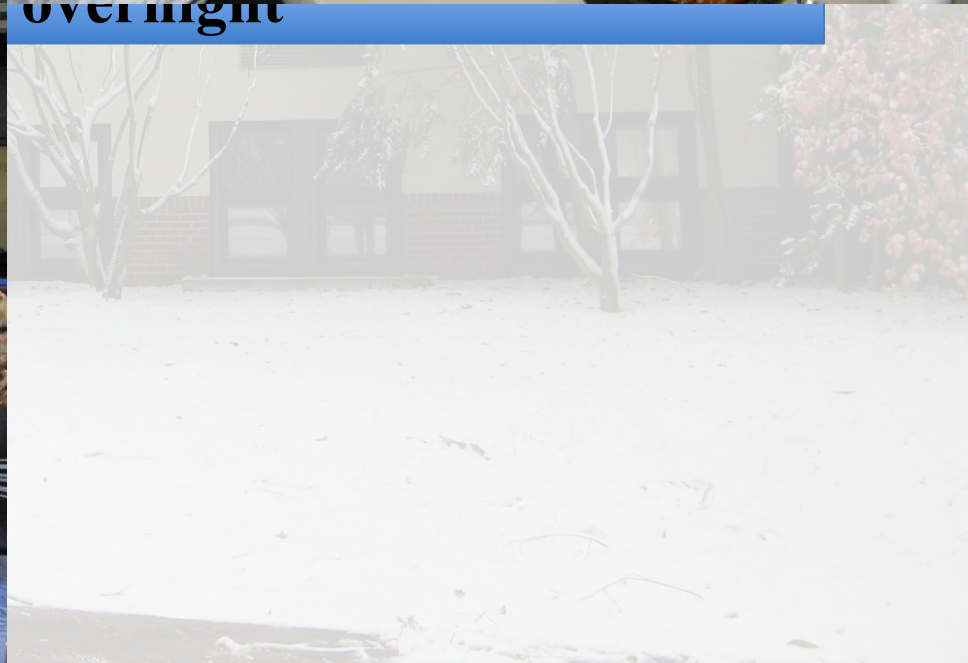




All-school overnight







overnight







# Multi-tiered Experiential Practices in a Public High School

**Walkabout**

**Interim**

**Student-taught classes**

**Linworth Forum**

**All-school overnight**

**Democratic element**



# Multi-tiered Experiential Practices in a Public High School

**Walkabout**

**Interim**

**Student-taught classes**

**Linworth Forum**

**All-school overnight**

**Town Meeting**



# Multi-tiered Experiential Practices in a Public High School

**Walkabout**

**Interim**

**Student-taught classes**

**Linworth Forum**

**All-school overnight**

**Town Meeting**

Once a week for 60 minutes

All 180 students

- Announcements,
- Proposals, and
- Discussion Topics



# Multi-tiered Experiential Practices in a Public High School

**Walkabout**

**Interim**

**Student-taught classes**

**Linworth Forum**

**All-school overnight**

**Town Meeting**

**Fairness Committee**



# Multi-tiered Experiential Practices in a Public High School

**Walkabout**

**Interim**

**Student-taught classes**

**Linworth Forum**

**All-school overnight**

**Town Meeting**

**Fairness Committee**

Conflict resolution process



# Multi-tiered Experiential Practices in a Public High School

**Walkabout**

**Interim**

**Student-taught classes**

**Linworth Forum**

**All-school overnight**

**Town Meeting**

**Fairness Committee**

Conflict resolution process

- Student(s) takes student(s),



# Multi-tiered Experiential Practices in a Public High School

<b>Walkabout</b>
<b>Interim</b>
<b>Student-taught classes</b>
<b>Linworth Forum</b>
<b>All-school overnight</b>
<b>Town Meeting</b>
<b>Fairness Committee</b>

Conflict resolution process

- Student(s) takes student(s),
- Staff member(s) takes student(s),



# Multi-tiered Experiential Practices in a Public High School

<b>Walkabout</b>
<b>Interim</b>
<b>Student-taught classes</b>
<b>Linworth Forum</b>
<b>All-school overnight</b>
<b>Town Meeting</b>
<b>Fairness Committee</b>

Conflict resolution process

- Student(s) takes student(s),
- Staff member(s) takes student(s), and
- Student(s) take Staff member(s).



# Multi-tiered Experiential Practices in a Public High School

<b>Walkabout</b>
<b>Interim</b>
<b>Student-taught classes</b>
<b>Linworth Forum</b>
<b>All-school overnight</b>
<b>Town Meeting</b>
<b>Fairness Committee</b>

Conflict resolution process

Adjudication happens with a six-person jury:

- 1 Case Leader (student)

- 4 Students

- 1 Staff member



# Multi-tiered Experiential Practices in a Public High School

**Walkabout**

**Interim**

**Student-taught classes**

**Linworth Forum**

**All-school overnight**

**Town Meeting**

**Fairness Committee**

**Scheduling process**

LINWORTH BLOCKS	HOME SCHOOL PERIODS	BLUE	ORANGE	ALTERNATIVE TIME FRAME
A	1 & 2	<p>Yoga</p> <p>Yoga</p> <p>Yoga</p>	<p>Yoga</p> <p>Yoga</p> <p>Yoga</p> <p>Yoga</p> <p>Yoga</p> <p>Yoga</p>	
B	3 & 4	<p>Yoga</p> <p>Yoga</p> <p>Yoga</p>	<p>Yoga</p> <p>Yoga</p> <p>Yoga</p> <p>Yoga</p> <p>Yoga</p> <p>Yoga</p>	
C	5 & 6	<p>Yoga</p> <p>Yoga</p> <p>Yoga</p>	<p>Yoga</p> <p>Yoga</p> <p>Yoga</p> <p>Yoga</p> <p>Yoga</p> <p>Yoga</p>	
D	7 & 8	<p>Yoga</p> <p>Yoga</p> <p>Yoga</p>	<p>Yoga</p> <p>Yoga</p> <p>Yoga</p> <p>Yoga</p> <p>Yoga</p> <p>Yoga</p>	





# Multi-tiered Experiential Practices in a Public High School

**Walkabout**

**Interim**

**Student-taught classes**

**Linworth Forum**

**All-school overnight**

**Town Meeting**

**Fairness Committee**

**Scheduling process**

**Sign-out**

# Multi-tiered Experiential Practices in a Public High School

<b>Walkabout</b>
<b>Interim</b>
<b>Student-taught classes</b>
<b>Linworth Forum</b>
<b>All-school overnight</b>
<b>Town Meeting</b>
<b>Fairness Committee</b>
<b>Scheduling process</b>
<b>Sign-out</b>

Philosophical element



# Multi-tiered Experiential Practices in a Public High School

**Walkabout**

**Interim**

**Student-taught classes**

**Linworth Forum**

**All-school overnight**

**Town Meeting**

**Fairness Committee**

**Scheduling process**

**Sign-out**

**No centralized grade-monitoring system**

# Multi-tiered Experiential Practices in a Public High School

**Walkabout**

**Interim**

**Student-taught classes**

**Linworth Forum**

**All-school overnight**

**Town Meeting**

**Fairness Committee**

**Scheduling process**

**Sign-out**

**No centralized grade-monitoring system**

**Informality & Ownership**









# Multi-tiered Experiential Practices in a Public High School

**Walkabout**

**Interim**

**Student-taught classes**

**Linworth Forum**

**All-school overnight**

**Town Meeting**

**Fairness Committee**

**Scheduling process**

**Sign-out**

**No centralized grade-monitoring system**

**Informality & Ownership**

**Ethos & Reflection**

# Multi-tiered Experiential Practices in a Public High School

Questions or comments?







