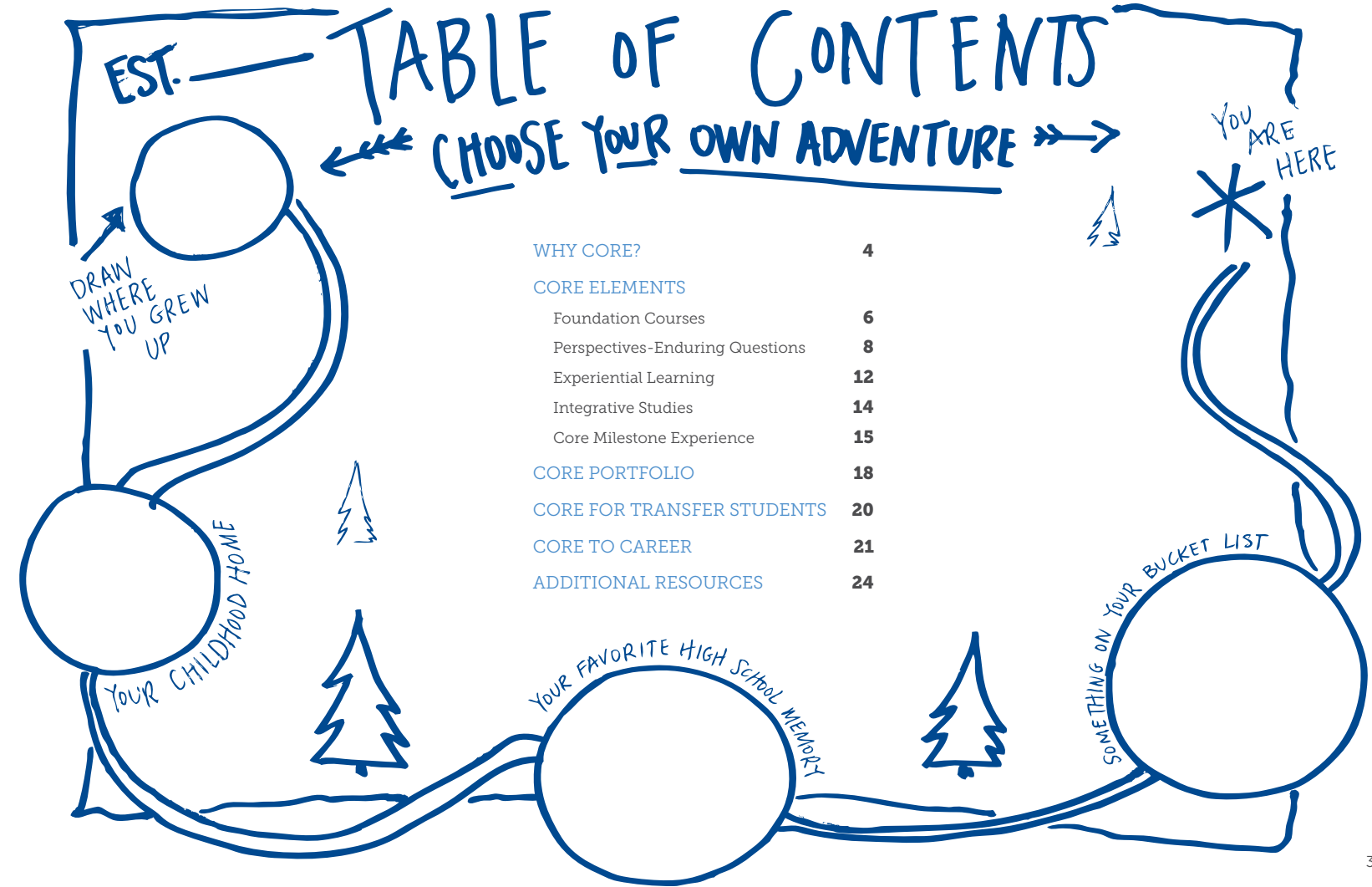


**NAZARETH COLLEGE**

# Your Guide to the Core

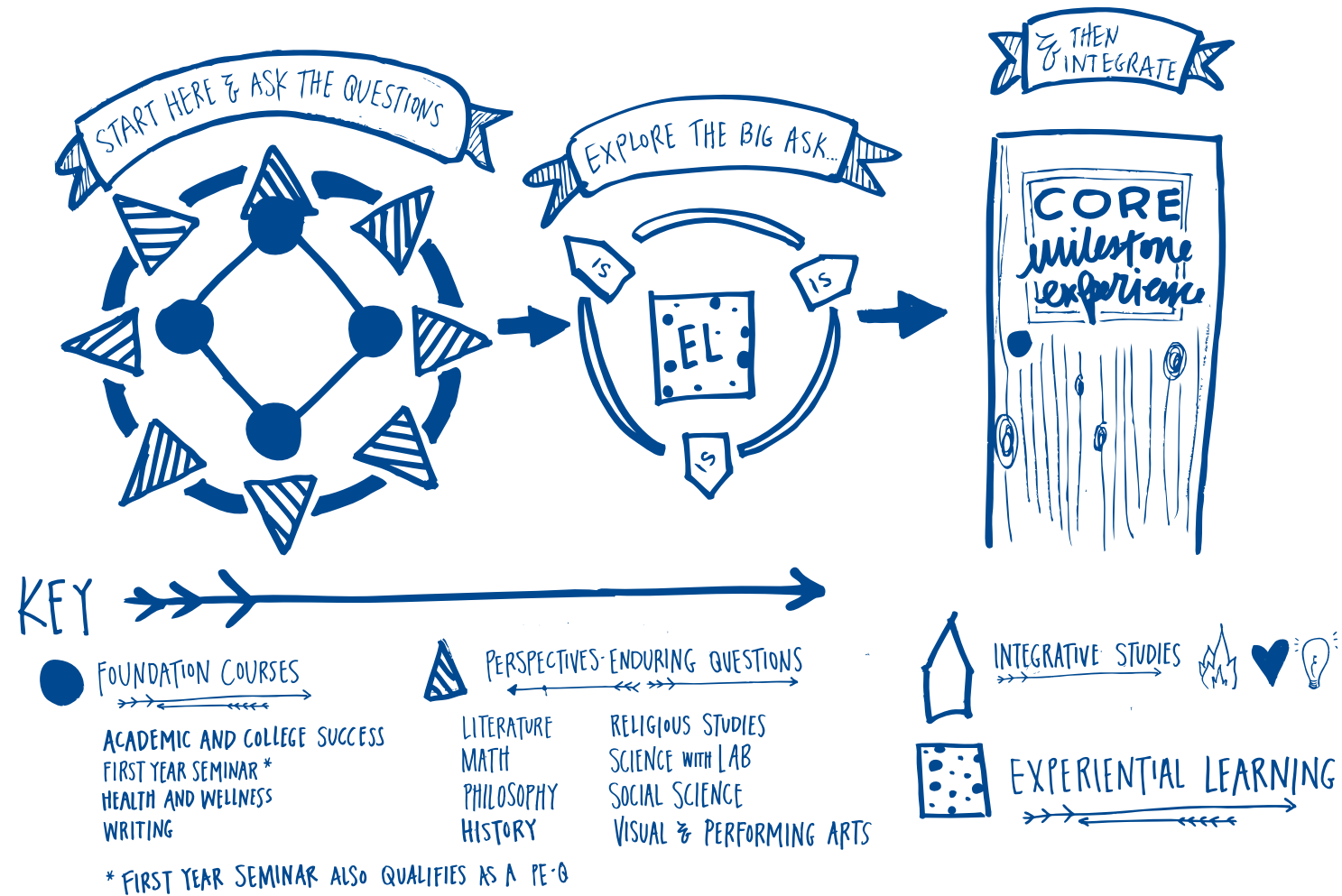






# Why CORE

The Core is a balance of structure and choice that does two things: it gives you a strong foundation in the liberal arts and sciences, and it guides you in discovering your own intellectual passions and crafting your own questions to explore. You'll gain both wider knowledge and a variety of skills that will expand your view of yourself and the world. This breadth of knowledge and skills is highly valued by employers across career fields, and it will definitely give you a competitive edge when you graduate. So, why Core? In the end, the Core helps prepare you for a meaningful life and an engaging career.

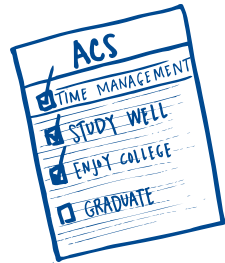


# CORE ELEMENTS | Foundation Courses



## First Year Seminar (FYS)

During the fall semester of your first year at Naz, you will take a First Year Seminar introducing you to one of eight liberal arts and sciences disciplines. Class sizes are small, and the course will provide you extra support as you learn how to tackle college-level academic work.



## Academic and College Success (ACS)

Also taken in the fall of your first year, Academic and College Success will teach you practical skills every college freshman needs, like how to study effectively and manage your time well. You'll also develop your own vision for success in college, meaningful life, and career.



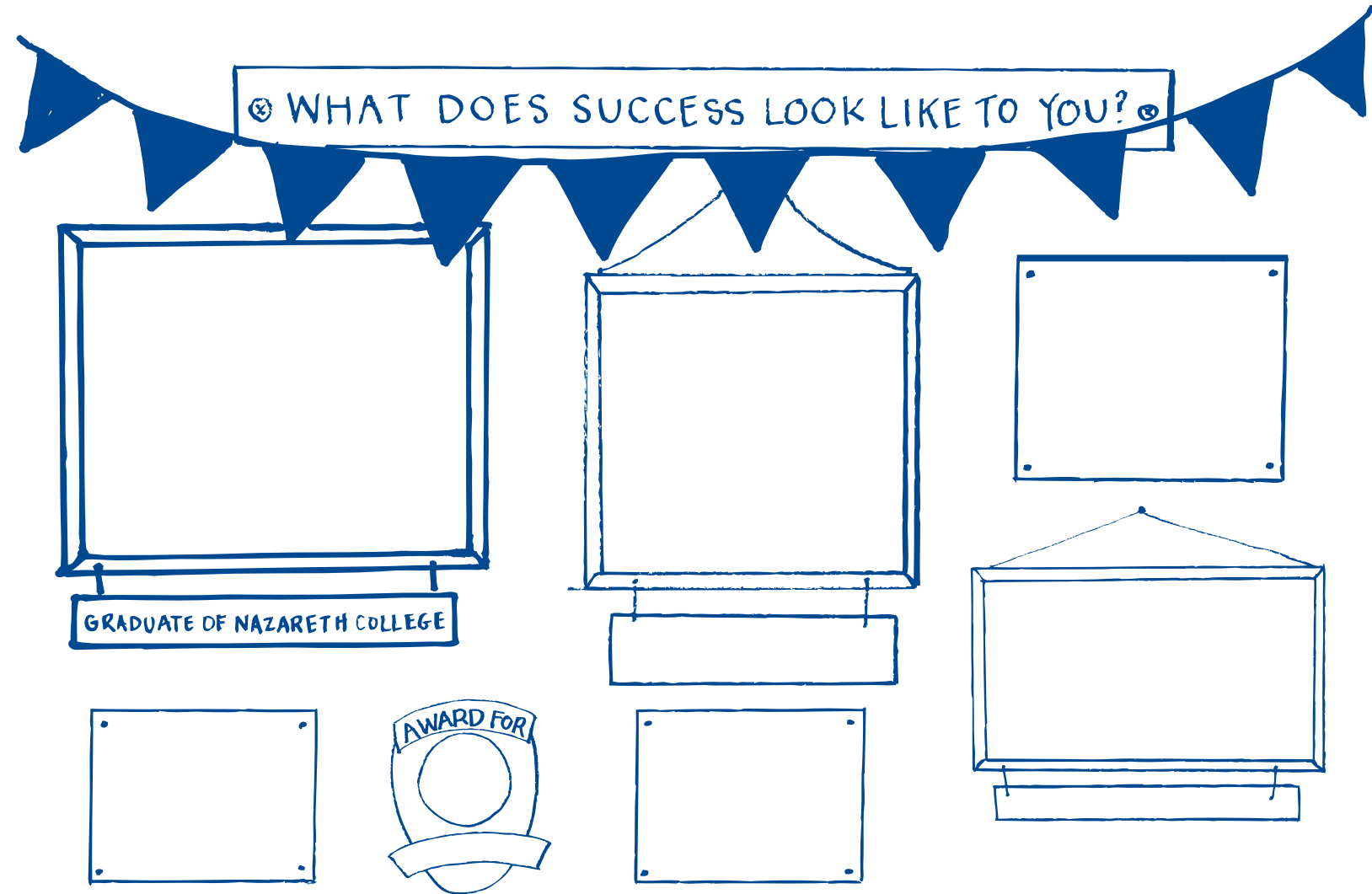
## Writing (ENGW 101 & 102)

Writing well is vitally important to communicating your ideas and succeeding in college and career. These courses provide a solid foundation for written communication. To continue to improve, you may use the many resources and tools available to you at Naz.



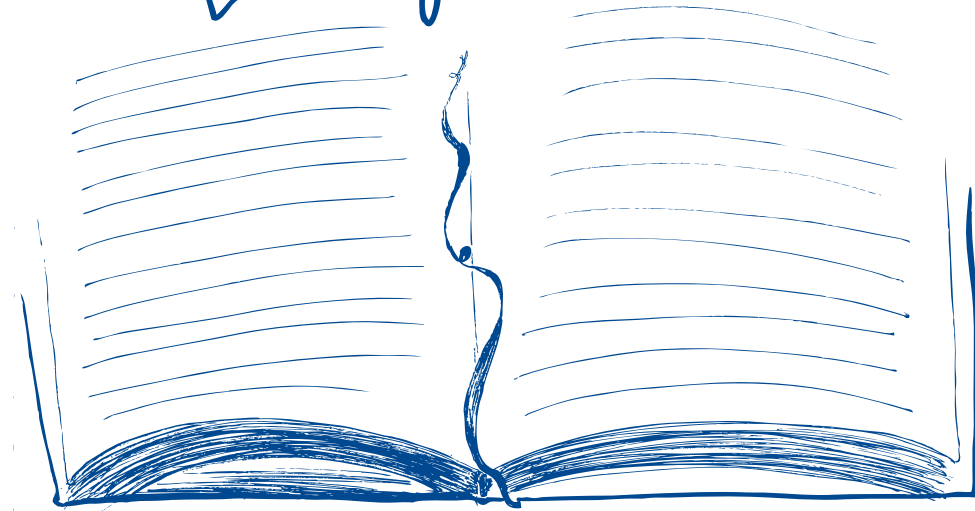
## Health and Wellness (H&W)

Part of your Core journey will include either a health and wellness course or participation on an athletic team for a season. Nazareth views wellness as a holistic process, and we encourage you to pursue physical, social, environmental, financial, spiritual, emotional, and intellectual wellness while you're here.

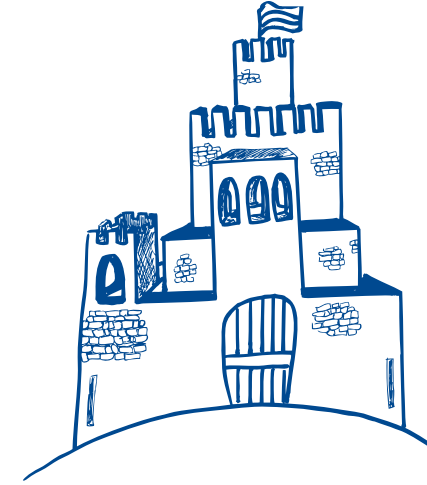


# CORE ELEMENTS | Perspectives-Enduring Questions (P-EQs)

## Enduring Questions



A strong foundation in the liberal arts and sciences introduces you to the world through multiple perspectives. These perspectives are framed by what we call “enduring questions” (big questions without easy answers). For the Core, you’ll take courses in the following eight Perspectives-Enduring Questions areas so you can expand the way you understand yourself and the world.



### History

#### Study the World in Historical Context

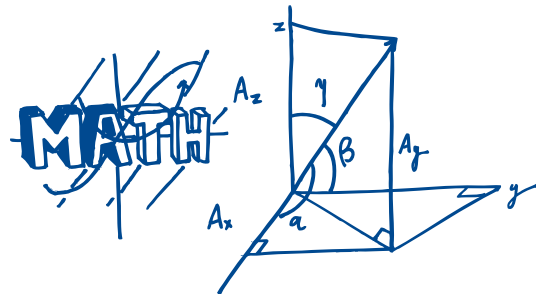
We study history to understand human experience across time, to understand patterns of politics and power, and to view the present in relation to those patterns. History helps to frame your culture and experience in a larger context of time and to help you understand where you fit. You will learn to think critically about the world through analysis of the past.



### Literature

#### See the World Differently through Text

Great literature from diverse cultures and identities gives us a lens through which to view the human condition. Literature provides a source of meaning and a way to understand human experience, relationships, power, beauty, and language. You will learn to ask and explore enduring questions through careful reading and analysis.



## Math

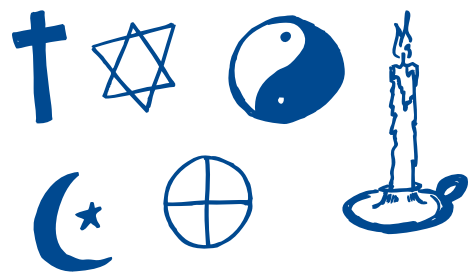
### Solve Complex Problems and See Patterns in the World

Mathematics develops your ability to reason logically, organize information, and solve complex problems. Learn how to explore the world through mathematical thinking, what it means to prove something through math, and how to approach problems through mathematical reasoning.

## Philosophy

### Question Everything about the World

Through the tools of philosophers, you will explore enduring questions such as “What is human happiness?” or “What is the meaning of life?” You will learn to use logic to think critically about life, meaning, beauty, freedom, and other elements of your world.



## Religious Studies

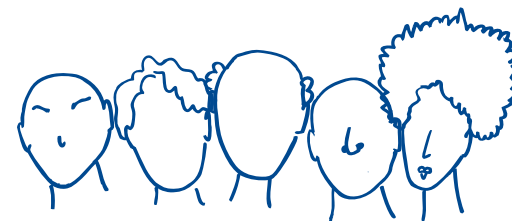
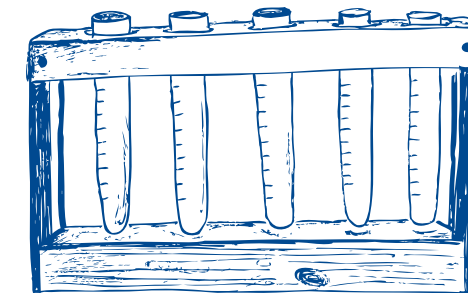
### Discover How We Ascribe Meaning to the World

Explore the meaning and purpose of life through the distinctive experiences, practices, and beliefs of major world religions. You will learn about the relationship between religion and culture in a global context with a focus on the diversity of human experience and religious practice and belief.

## Science with Lab

### Ask Questions about the Natural World

Through courses in biology (building blocks and ecosystems of life), chemistry (elements that make up all things), physics (forces that affect objects), earth science (natural environment and geology), or the science of sound (physical and mathematical properties of sound), you will learn how to understand and explore the natural world with the use of scientific methods and reasoning.



## Social Science

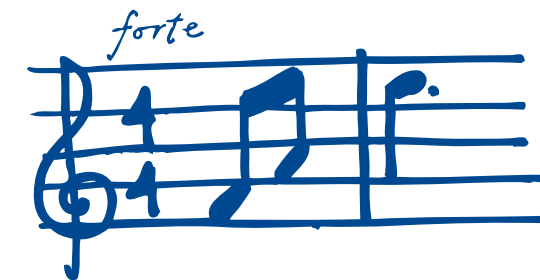
### Examine People Relating in and to the World

Learn about human cultures across the boundaries of time and space (anthropology), the science of human behavior (psychology), human systems to manage and use resources (economics), forms and function of political systems (political science), or group behavior and social systems (sociology). The various perspectives in the social sciences give you insight into human relationships, systems, and behavior.

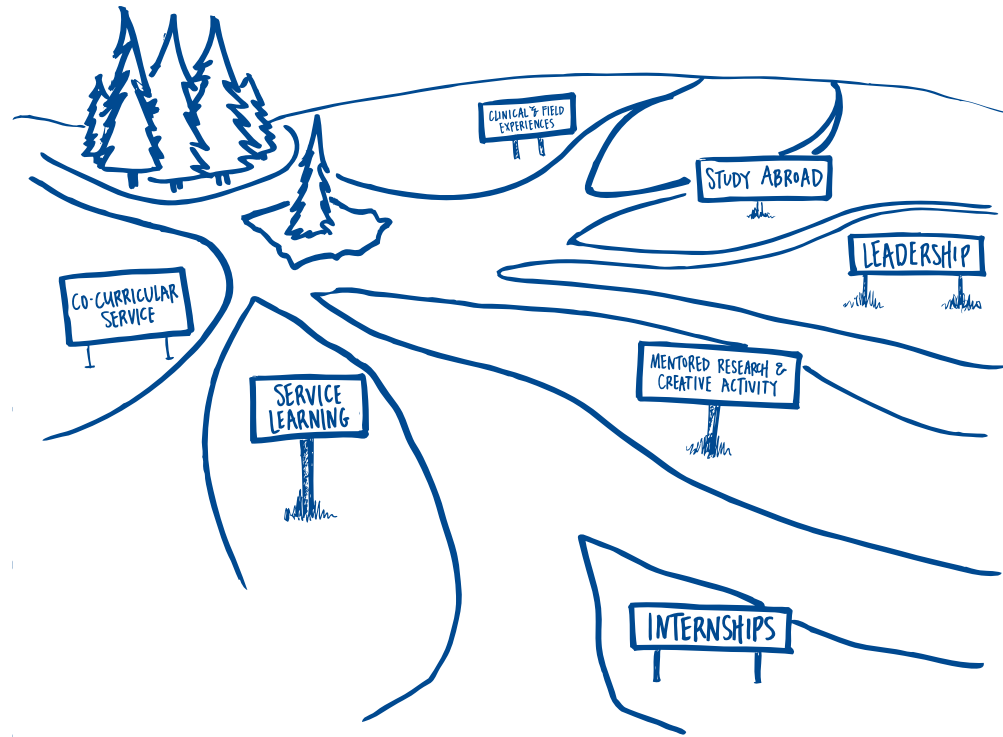
## Visual/Performing Arts

### View the World through the Creative Lens of the Arts

Learn about human creative expression through bodily movement (dance), creative sound and melody (music), writing and performing dramatic scenes (theatre arts), or the communication of meaning through creative two- and three-dimensional forms (visual arts).



# CORE ELEMENTS | Experiential Learning (EL)



**You will know you can do it, because you've done it.**

Our Core asks you to take your learning beyond the college classroom. Experiential Learning opportunities apply your knowledge in the real world through a range of mentored experiences. One Experiential Learning activity is required, but we encourage you to complete more than one. Each pathway provides meaningful activities that give you hands-on skills and prepare you for life and work.

What might Experiential Learning look like for you?

## Clinical and Field Experiences

Practice your future career in supervised classroom and clinical settings, especially as part of major programs in education and health and human services.

## Internships

Work in a variety of fields with guided reflection and mentorship from supervisors. Required for some majors, but available to all students.

## Leadership

Build leadership skills and experience through structured opportunities and take those skills with you into your career.

## Co-Curricular Service

Work to create a better community and world through Naz's nationally recognized civic engagement opportunities, such as Partners for Learning, Partners for Serving, Homework Help, LifePrep@Naz, or Alternative Spring Break.

## Service-Learning

Learn the content of an academic course by engaging with the community in thoughtful and meaningful ways. Service-learning courses can be part of your core, minor, major, or electives.

## Study Abroad

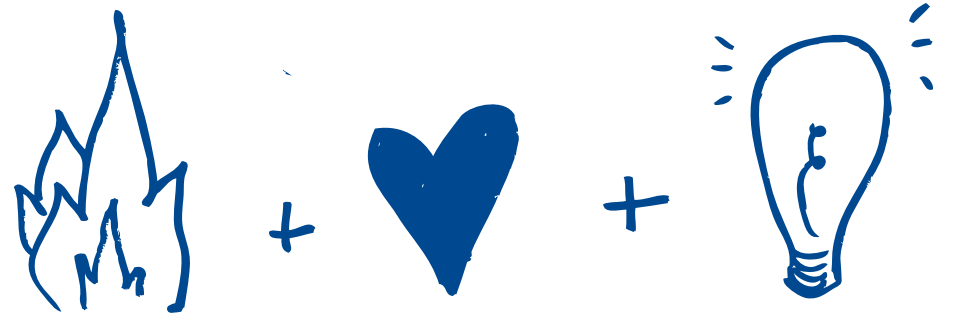
Engage with the world through a short- or long-term study abroad experience. Naz offers a wide variety of international learning options, ranging from two-week, faculty-led trips to living and studying in another country for a semester or year.

## Mentored Research and Creative Activity

Work closely with faculty in your field to complete a sustained and meaningful research project or creative endeavor.



## CORE ELEMENTS | Integrative Studies (IS)



# INTEGRATIVE STUDIES

This part of the Core focuses on an intellectual interest or passion that you want to explore in depth and integrate into your overall studies. Does some idea spark your curiosity? With your advisor, you will choose three courses to help you explore that interest and articulate your own enduring question.

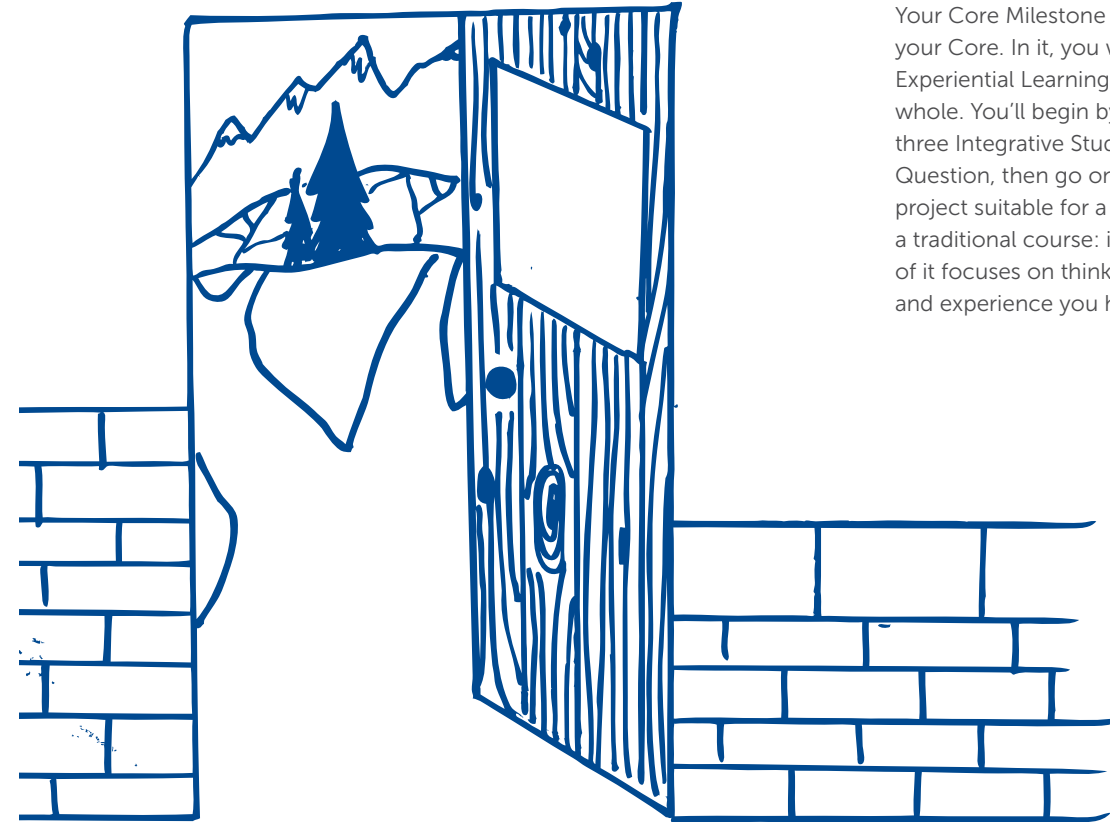
For example, one student identified interest in the impact of genocide on future generations and chose these three courses to integrate:

**Religion**—Auschwitz and After: Religious Questions and Dilemmas

**Sociology**—Deviance or Race, Ethnicity and Society

**History**—Native Americans: Removal to Present

## CORE ELEMENTS | Core Milestone Experience (CME)



Your Core Milestone Experience is the final element of your Core. In it, you will draw all your coursework and Experiential Learning together to make a meaningful whole. You'll begin by officially identifying your three Integrative Studies courses and your Enduring Question, then go on to explore that question with a project suitable for a public CME showcase. This is not a traditional course: it meets only four times, and much of it focuses on thinking deeply about the knowledge and experience you have gained.

# CORE MILESTONE EXPERIENCE

BIG IDEA	ENDURING QUESTION	KEY CONCEPTS	CULTURAL EXAMPLE	IS #1	IS #2	IS #3	EL	PROJECT
POWER	What is the relationship between absolute power and revolution?	Government power and control violence revolution poverty reality television	The Hunger Games	Sociology SOC 320: Social Classes	Political Science PSC 401: Modern Revolutions	Peace and Justice PAJ 202: Conflict Resolution	Internship in marketing agency  OR  Sem 1C Learning course ENGL. Q 120: Crime and Punishment in USA	Create video project exploring the social and economic conditions that can lead to social revolution and violence

# CORE MILESTONE EXPERIENCE

BIG IDEA	ENDURING QUESTION	KEY CONCEPTS	CULTURAL EXAMPLE	IS #1	IS #2	IS #3	EL	PROJECT

# CORE PORTFOLIO

Your Core portfolio is like your own Core website that reflects the skills, knowledge, and experiences you have in your Core. It captures your plan, helps you track your progress, and not only gathers your work but lets you share it with others.

For each of your Core Elements, you'll upload an artifact that represents your work. Your professors in ACS, EL, and CME will be able to check your progress and give you feedback on your work, guiding you in reflecting on the knowledge and skills you acquire.

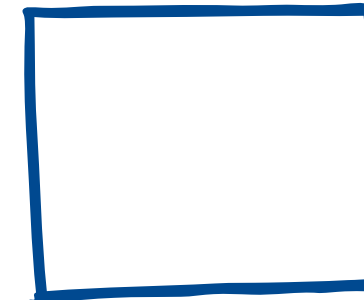
When you create your portfolio, you'll start with one of several templates in Google Sites, but what you do with it after that is up to you. You can make it your own by adding images, changing backgrounds, colors, fonts, layout, etc.



\_\_\_\_\_  
YOUR NAME HERE  
\_\_\_\_\_

- ACS
- ACS BLOG
- EXPERIENTIAL LEARNING INTEGRATION
- CME
- IS#1
- IS#2
- IS#3
- ORAL PRESENTATION
- P-E@s
- HISTORY
- LITERATURE
- MATHEMATICS
- PHILOSOPHY
- RELIGIOUS STUDIES
- SCIENCE
- SOCIAL SCIENCE
- VISUAL/PERFORMING ARTS
- WRITING

## SELF INTRODUCTION



\_\_\_\_\_

\_\_\_\_\_

\_\_\_\_\_

\_\_\_\_\_

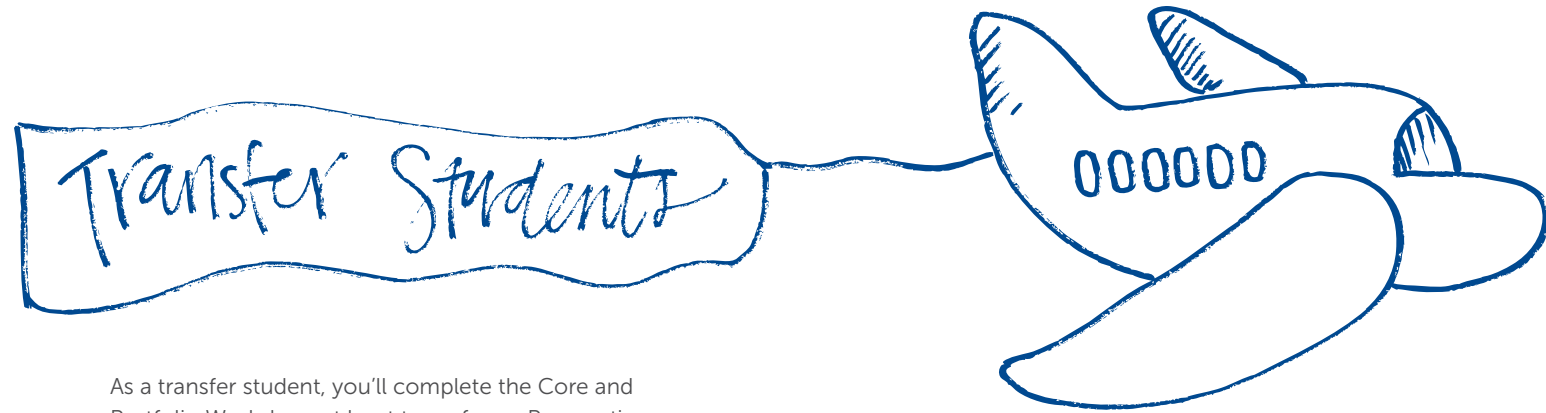
\_\_\_\_\_

\_\_\_\_\_

\_\_\_\_\_

\_\_\_\_\_

## CORE FOR TRANSFER STUDENTS



As a transfer student, you'll complete the Core and Portfolio Workshop, at least two of your Perspectives-Enduring Questions (P-EQ) courses, and your Core Milestone Experience (CME) at Naz. You can transfer up to six P-EQ courses, one Health and Wellness, and your three Integrative Studies (IS) courses. The IS courses must be upper level, with at least two outside your major, and must relate to an interest or question of your design. You should bring your ideas, passions, and questions to your advisor, who will help you identify your IS courses and prepare for the CME.

## CORE TO CAREER

Some schools may excel at helping students develop hard skills, or job-specific qualifications. Others cultivate soft skills like persuasive speaking or creative problem-solving. Nazareth combines these skills in a way that produces graduates who have an immediate competitive edge in the workforce.

The Core is designed to challenge your mind, make you a critical thinker, foster deep curiosity, and inspire collaboration. It's no coincidence that these are the same traits employers seek in the next generation of professionals.

The Core also requires real-life learning—early opportunities outside the classroom to put your studies into practice through internships, clinical work, or student teaching. Real-world experience is built right into your major.



## CORE TO CAREER | Acquiring Career Skills



At the two bookends of your Core experience—Academic and College Success during your freshman year and the Core Milestone Experience your senior year—you will be asked to consider your definition of success, articulate your goals, and follow up on them as related to your future career. Understanding and exploring your goals will help you take advantage of the many opportunities available to you at Naz.

Your Perspectives-Enduring Questions coursework and its liberal arts and sciences foundation will help you gain skills employers value, including communication, critical thinking, problem solving, and quantitative literacy.

Through your Experiential Learning opportunity, you will gain hands-on skills that will build your confidence and your resume. Experiential Learning lets you explore the world of work outside the classroom and apply what you've learned to problems and issues facing your world.

## CORE TO CAREER | Skills Valued by Employers

Following is a list of skills that the Core helps you acquire—and that employers look for in prospective professionals. Coursework, athletics, internships, service-learning, and other experiences all help build these skills. Use the list below to help track where you find yourself acquiring them. What are the gaps where your skills need more development?

**Writing**

**Speaking**

**Creative thinking**

**Critical thinking**

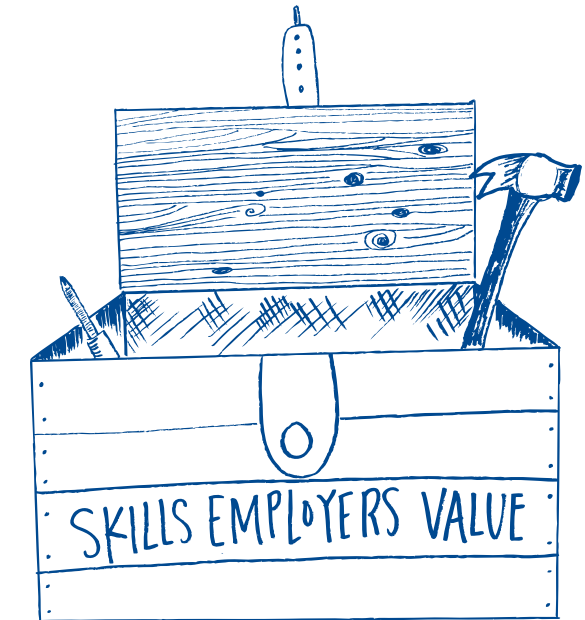
**Problem solving**

**Technological proficiency**

**Quantitative literacy**

**Global dexterity**

**Teamwork**



# ADDITIONAL RESOURCES

## **If you need help with your courses, study skills, organization, and more:**

Center for Student Success offers success coaches who provide individualized support for your transition to college. It can also connect you with tutors and learning labs for help in any course at Naz.

Contact Thomas Chew, director of the Center for Student Success, at [tchew3@naz.edu](mailto:tchew3@naz.edu) or check out the Student Success website to apply for a success coach or request a tutor: [go.naz.edu/success-coaching](https://go.naz.edu/success-coaching)

## **If you have questions about the Core:**

Contact Dr. Rachel Bailey Jones, director of the Core, at [rjones3@naz.edu](mailto:rjones3@naz.edu) or visit the Core website [naz.edu/core](https://naz.edu/core)

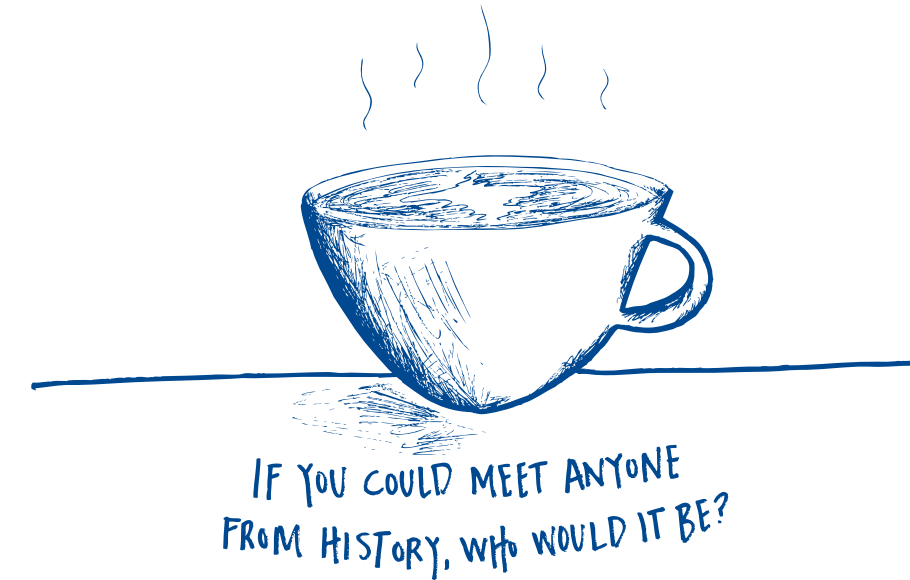
Or contact Academic Advising with questions [naz.edu/advisement](https://naz.edu/advisement)

## **If you have any questions about your Core Portfolio:**

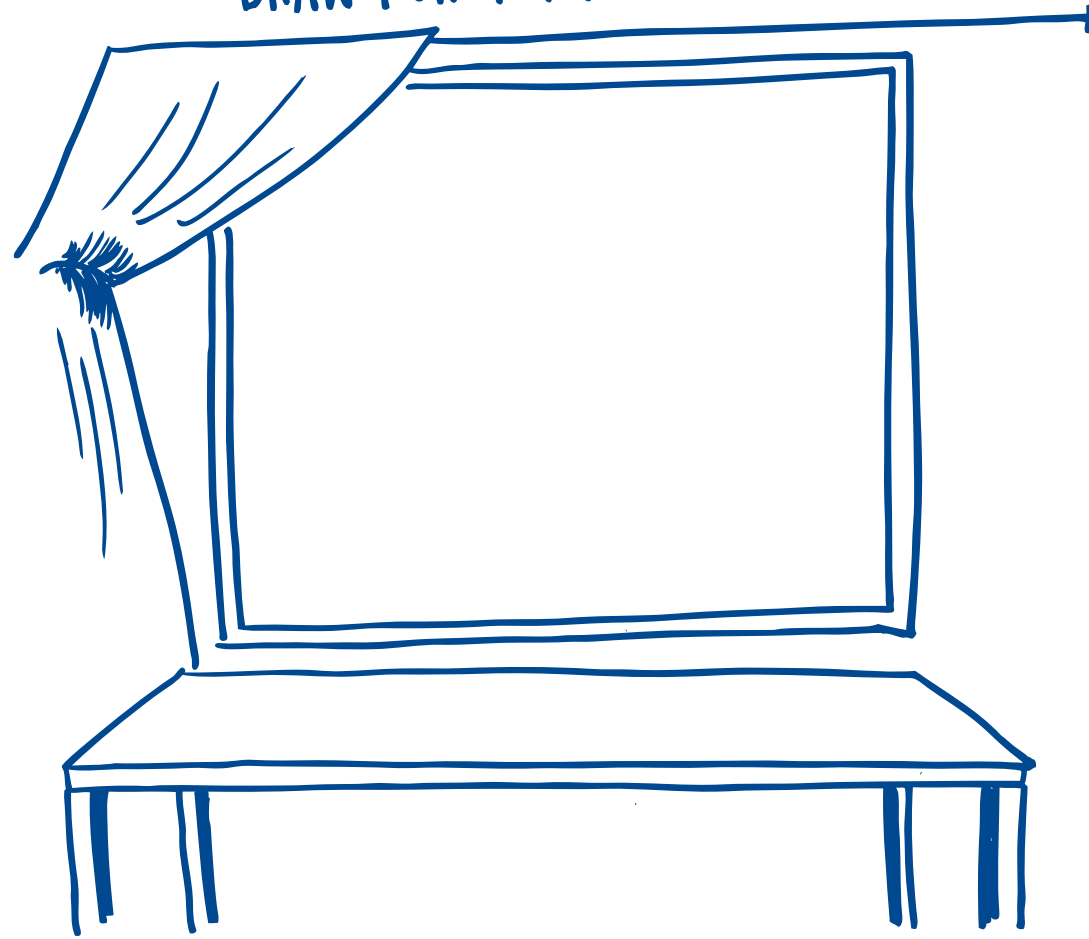
Contact Alicia Collins at [acolli63@naz.edu](mailto:acolli63@naz.edu) or check out the Portfolio Support website: [go.naz.edu/portfolio-support](https://go.naz.edu/portfolio-support)

## **If you need to add/drop classes, add/drop a minor or major, or have questions about registering for courses:**

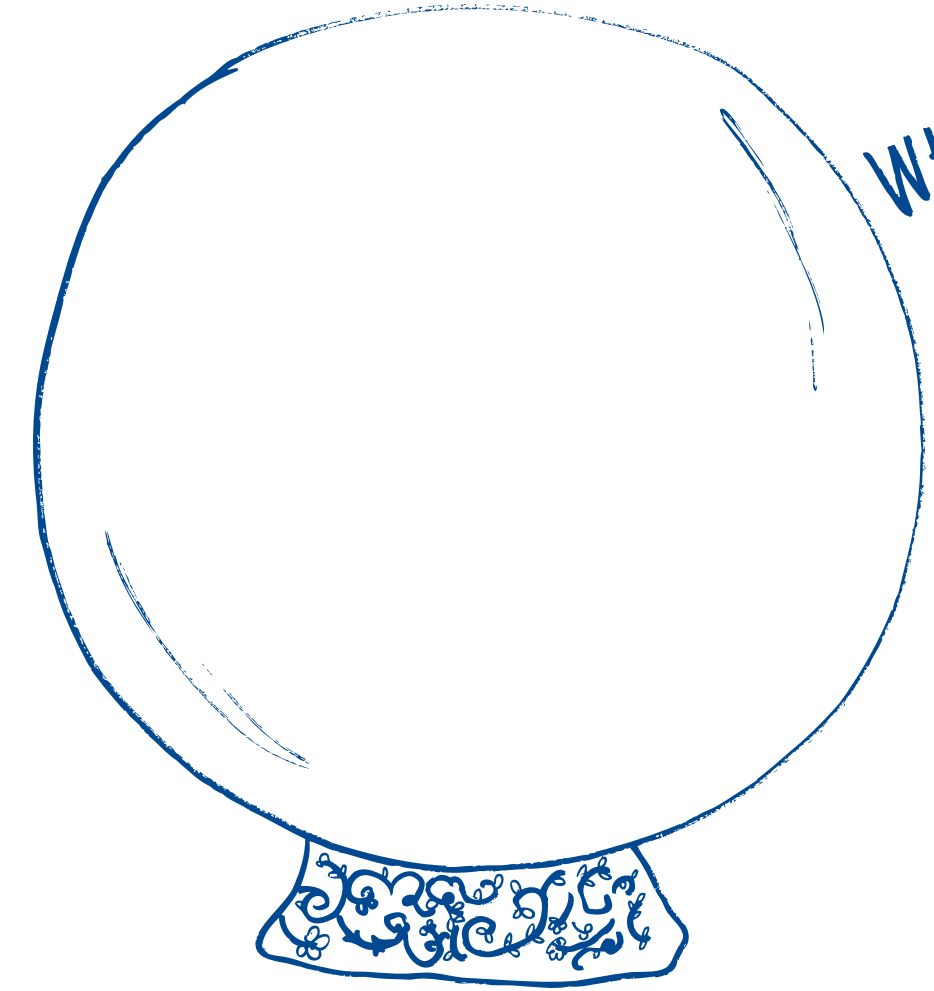
Contact the Registrar's Office at [naz.edu/registrar](https://naz.edu/registrar)



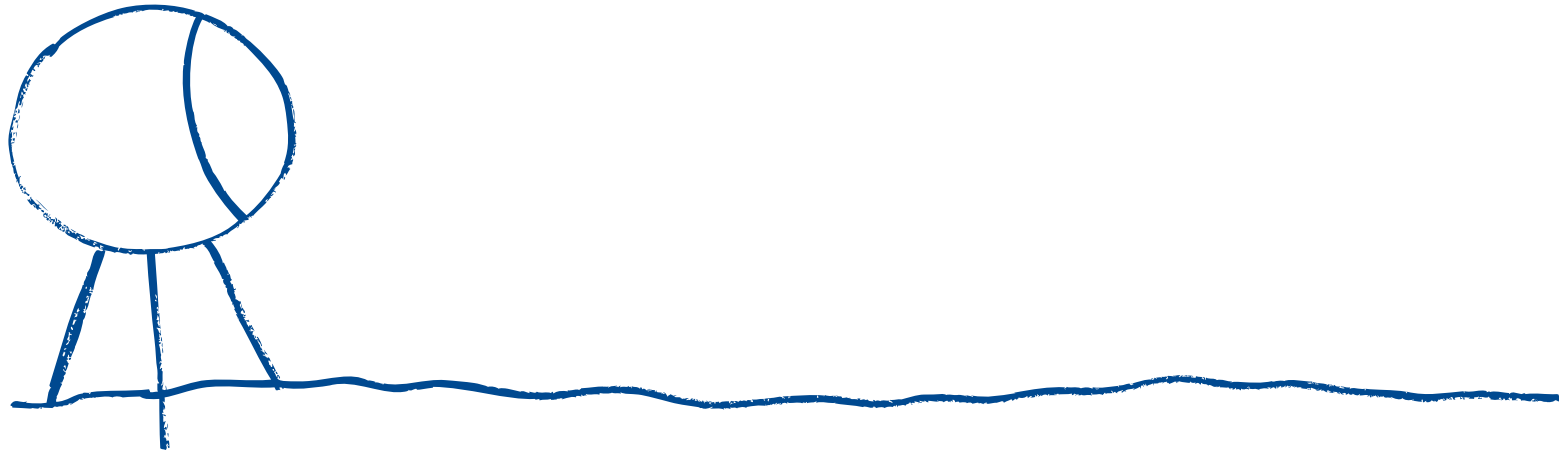
DRAW YOUR FUTURE DESK VIEW



WHAT WILL LIFE LOOK  
LIKE IN 2100?



YOU'VE JUST LANDED ON A NEW  
PLANET. WHAT DO YOU SEE?





4245 East Avenue, Rochester, NY 14618 ▪ [naz.edu/core](http://naz.edu/core) ▪ 585-389-5139