

**Helping Flame Phoenix**

**Monarch**

*Phaenicia phaeogenes*

**Gulf Fritillary**

*Aganippe carolinensis*

**The Butterfly Garden**

"Serpentine of Knowledge in Taylor's, Taylor's Bottom Line,"

"People, Plants, and the Planet"

• Sustainable design and construction practices for the future.

• Greenhouse and the future of the planet.

• Greenhouse and the future of the planet.

**The Vision**

**Buckeye**

*Junonia coenia*

**Donorship Objectives**

• Supporting the "Seeds of Inspiration" project.

• Supporting the "Seeds of Inspiration" project.

• Supporting the "Seeds of Inspiration" project.

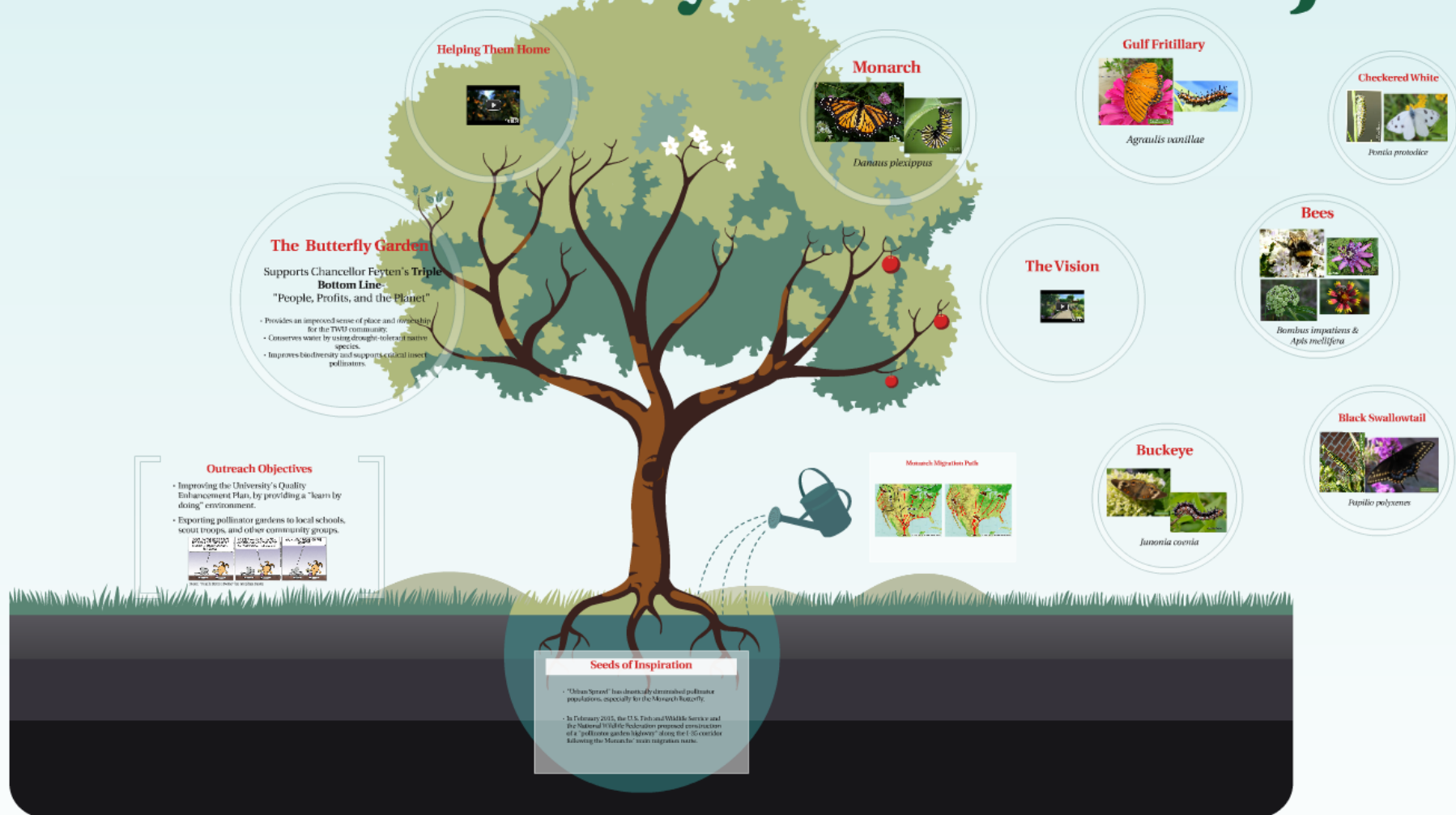
**Seeds of Inspiration**

• Supporting the "Seeds of Inspiration" project.

• Supporting the "Seeds of Inspiration" project.

• Supporting the "Seeds of Inspiration" project.

# The TWU Butterfly Garden Project



# Seeds of Inspiration

- "Urban Sprawl" has drastically diminished pollinator populations, especially for the Monarch Butterfly.
- In February 2015, the U.S. Fish and Wildlife Service and the National Wildlife Federation proposed construction of a "pollinator garden highway" along the I-35 corridor following the Monarchs' main migration route.

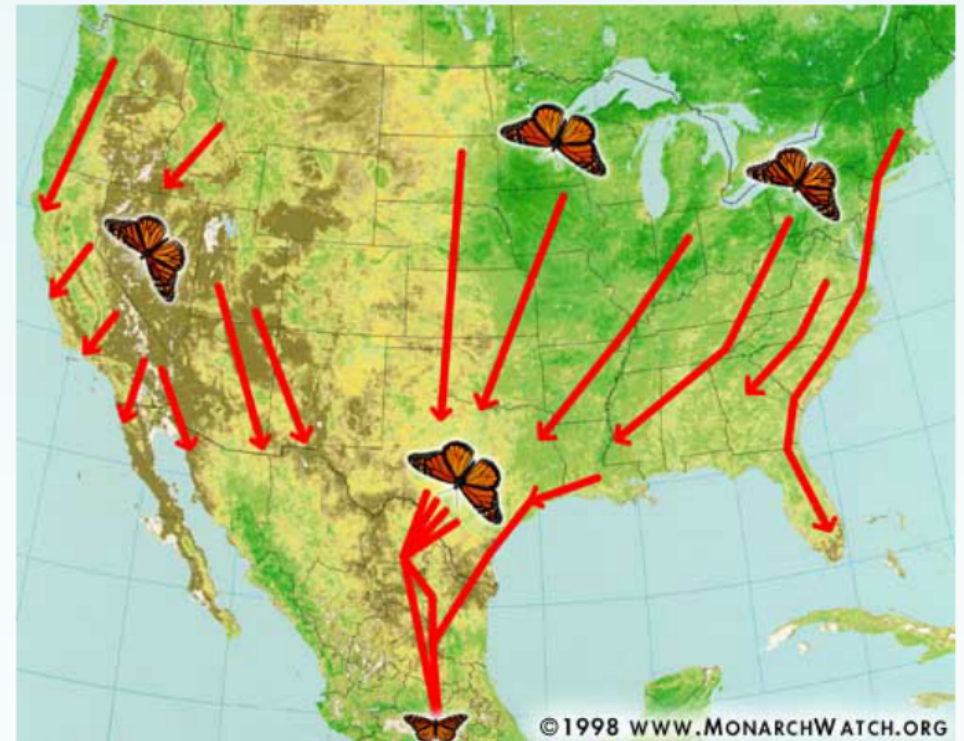
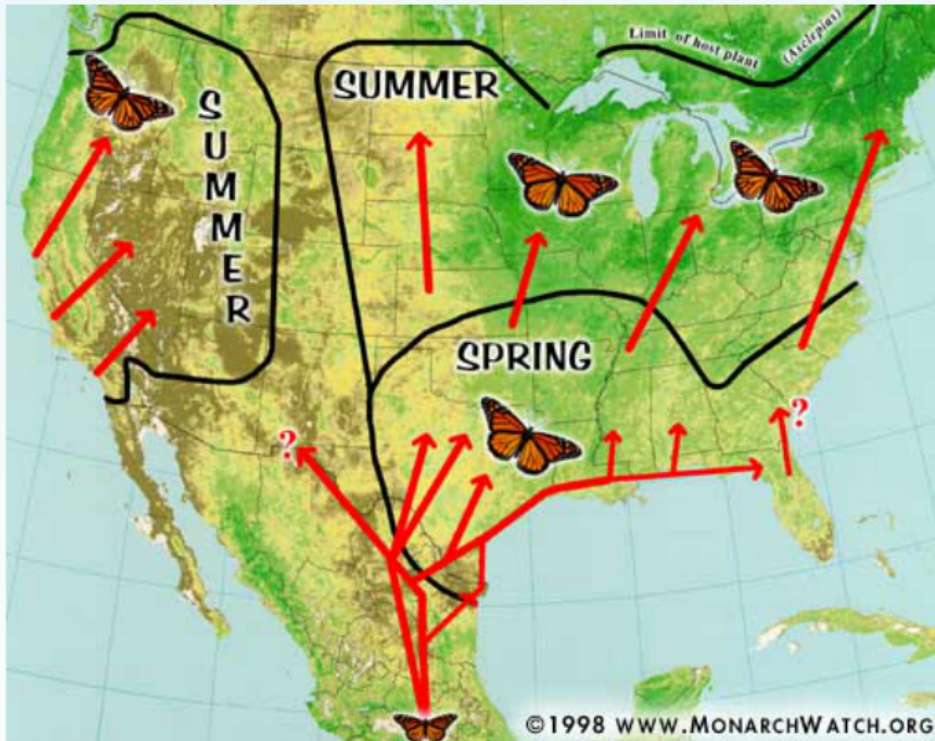
# The Butterfly Garden

Supports Chancellor Feyten's **Triple Bottom Line-**  
"People, Profits, and the Planet"

- Provides an improved sense of place and ownership for the TWU community.
- Conserves water by using drought-tolerant native species.
- Improves biodiversity and supports critical insect pollinators.



# Monarch Migration Path



# Helping Them Home



# Monarch



*Danaus plexippus*



# Black Swallowtail



*Papilio polyxenes*

# Gulf Fritillary



*Agraulis vanillae*

# Checkered White



*Pontia protodice*

# Buckeye



*Junonia coenia*



# Bees



*Bombus impatiens &  
Apis mellifera*

# The Vision



# Outreach Objectives

- Improving the University's Quality Enhancement Plan, by providing a "learn by doing" environment.
- Exporting pollinator gardens to local schools, scout troops, and other community groups.



From: "Pearls Before Swine" by Stephan Pastis